



# Lawton & Dawe PROPERTIES



Lawton & Dawe  
PROPERTIES

## 80a Stoneham Road

Hove, BN3 5HH

**£359,000**

Tucked away in a quiet corner of Hove, close to Stoneham Park, this top (2nd floor) flat is available with no chain! The flat itself is in a tidy, modern block which benefits from an accessible roof terrace to admire the view!

Entering the property, you have a good-sized hallway with storage cupboard, two bedrooms (one with built in storage), compact bathroom with shower over bath and modern fittings. The open plan kitchen/living room is the hub of the flat and provides bright and spacious living space. The kitchen has plenty of storage in gloss units, a built-in oven, dishwasher, and large fridge/freezer, the large lounge area with wooden style flooring leads onto the good size, south facing, private balcony – with high opaque glass panels for total privacy. The property has gas central heating.

The flat is currently a buy to let investment and offered with no chain.

Leasehold with 114 years remaining  
Service charge - £1,43.70 per annum  
Current ground rent - £175 per annum  
Council tax band C

- Leasehold flat
- Second floor
- South facing balcony
- Two bedrooms
- Quiet Hove location
- Gas central heating
- No chain

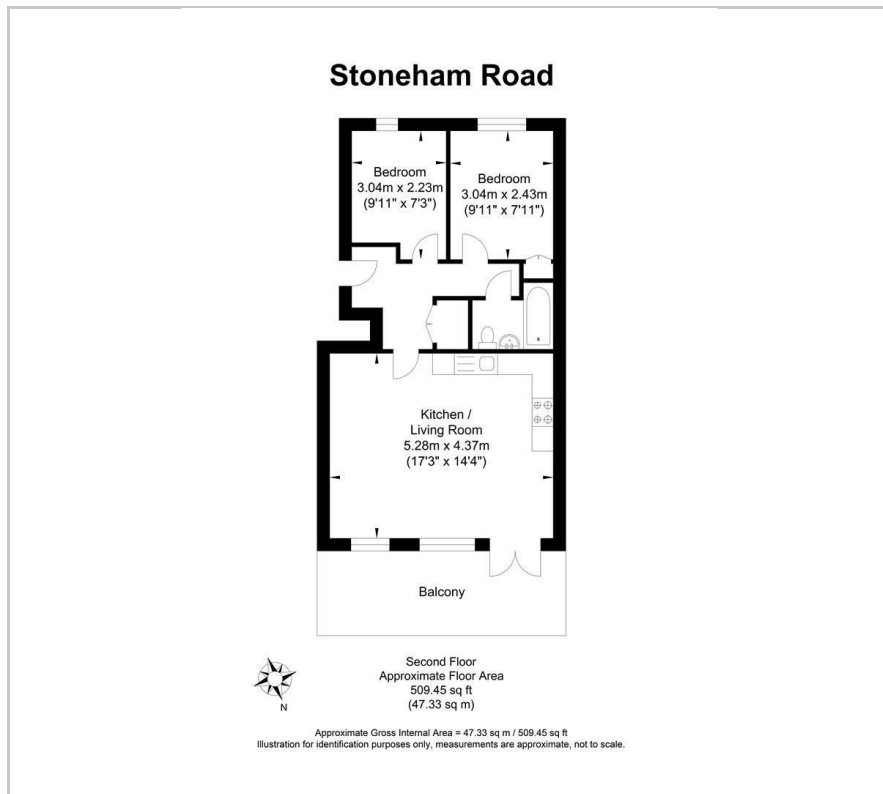
### Viewing

Please contact our Lawton & Dawe Properties Ltd Office on 01273917791 if you wish to arrange a viewing appointment for this property or require further information.





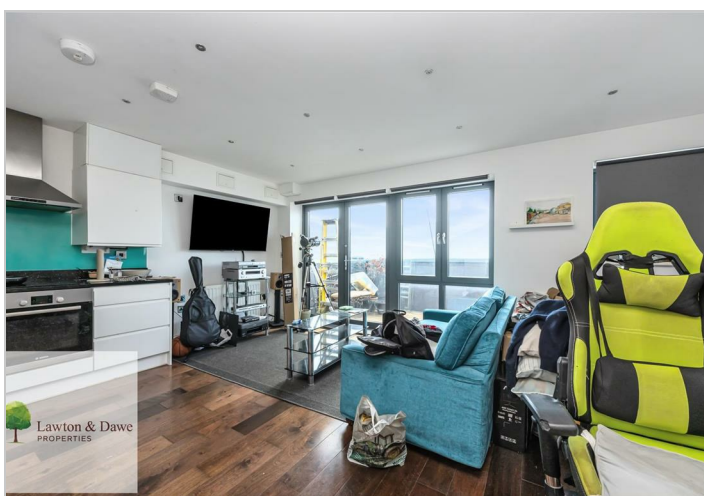
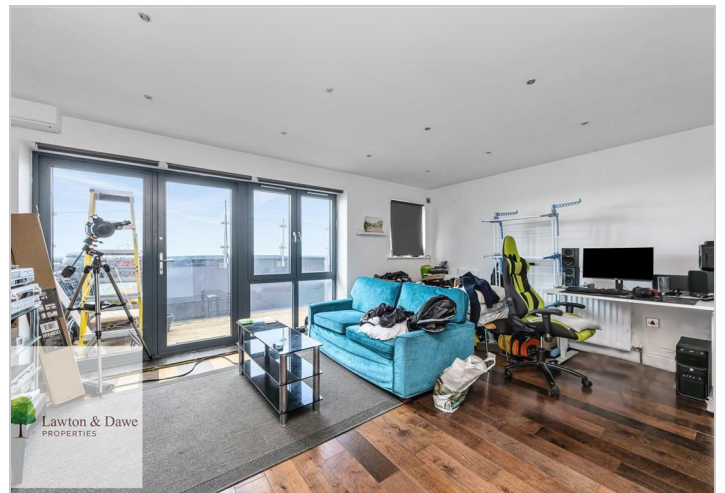
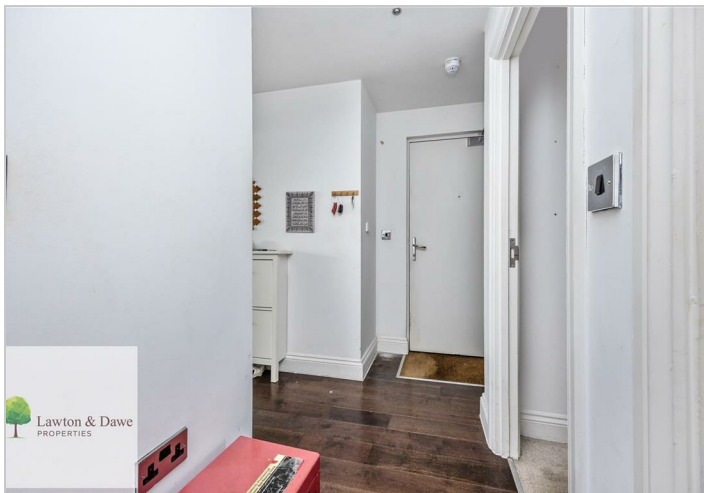
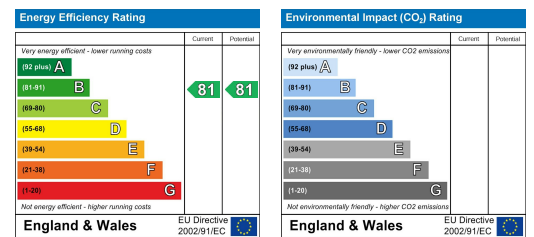
## Floor Plan



## Area Map



## Energy Efficiency Graph



These particulars, whilst believed to be accurate are set out as a general outline only for guidance and do not constitute any part of an offer or contract. Intending purchasers should not rely on them as statements of representation of fact, but must satisfy themselves by inspection or otherwise as to their accuracy. No person in this firm's employment has the authority to make or give any representation or warranty in respect of the property.